

IO-Link premium integration

For Siemens and Rockwell Automation

Machine manufacturers, skid builders, as well as food & beverage producers themselves, use IO-Link devices to benefit from some added value for their machines, plants and processes, as they have smarter equipment in place, which provides for instance better diagnostic data and the ability to solve applications more efficiently.

Purpose When using IO-Link technology in process control systems, dealing with a simple, fast and seamless integration process is preferred by most system engineers. The Endress+Hauser IO-Link Function Block Libraries were developed to further increase user-friendliness at this point.

Simplification The Endress+Hauser IO-Link function blocks simplify the integration of IO-Link device data into PLC programs. This makes reading and writing device parameters much easier and thus minimizes time and effort. The software-based products support the entire integration process of the programming and are tailored to all launched Endress+Hauser IO-Link devices.

With the IO-Link premium integration package, Endress+Hauser delivers function blocks for the popular control systems from Siemens and Rockwell Automation.

The most common device functions required in process applications are now easily accessible via function blocks to be applied in the process control system.



Examples:

- Totalizer control (set, preset, reset)
- Hysteresis values (configure the switching points via function block)
- Device simulation
- Extended device diagnostics
- Quickly detecting changes of the device status (many Endress+Hauser IO-Link devices come with an extended version of the device status and as soon as there is a change, the corresponding function block automatically requests further details to be transmitted acyclically)

Your benefits at a glance:

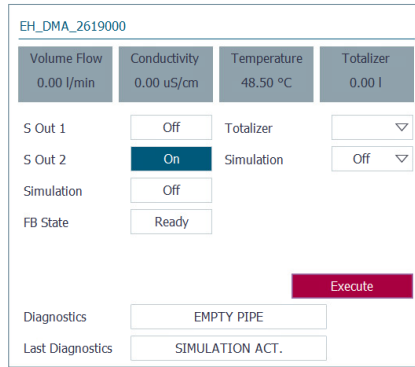
- **Fast and easy PLC/DCS integration**
The Function Block Library eliminates the need to refer to device-specific user manuals. The integration engineer no longer needs to deal with complex bytestrings and mathematical conversion operations. This task is already performed by the provided function blocks.
- **Save time**
No searches for data types, parameter indices or process data structures in product documents. These are already contained in the function blocks.
- **Avoid errors**
The function blocks ensure a fast and error free integration of IO-Link device data.
- **Added value**
Delivering extended diagnostic data during the ongoing process.
- **Easily customizable**
Extremely simplified access to acyclic data services and parameters of the IO-Link devices (the function block code is accessible and can be used as a template or starting point for additional functionalities).

Current IO-Link master support:

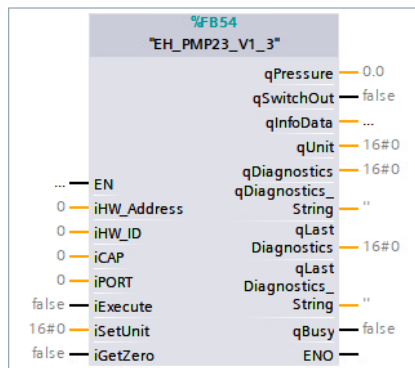


How to get the function block download packages for free:

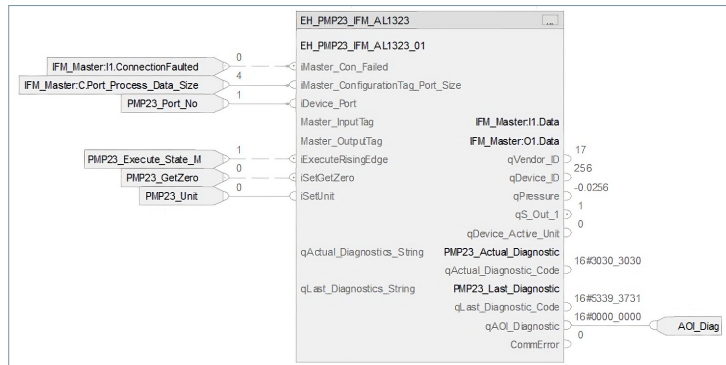
1. Visit the website endress.com
2. Search for the IO-Link device of your choice (e.g. "Smartec CLD18")
3. Visit the detail page of that specific product
4. Therein, select "Downloads" and click the menu item called "Software"
5. Then click the "Download" button within the entry "IO-Link Function Block Library"
6. Extract the newly downloaded ZIP file and open the PDF documentation to follow all further steps



HMI faceplate



Function Block Siemens



Function Block Rockwell Automation

www.addresses.endress.com